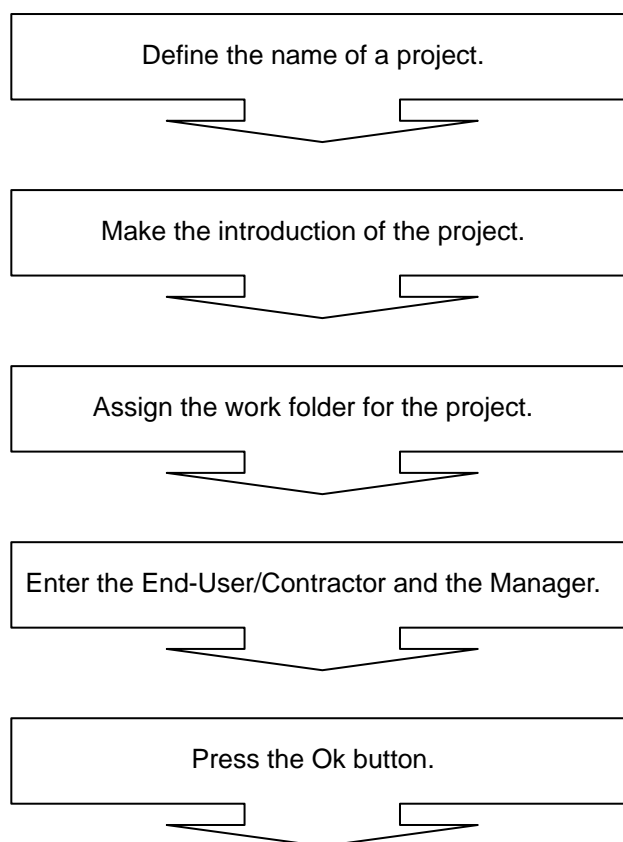


---

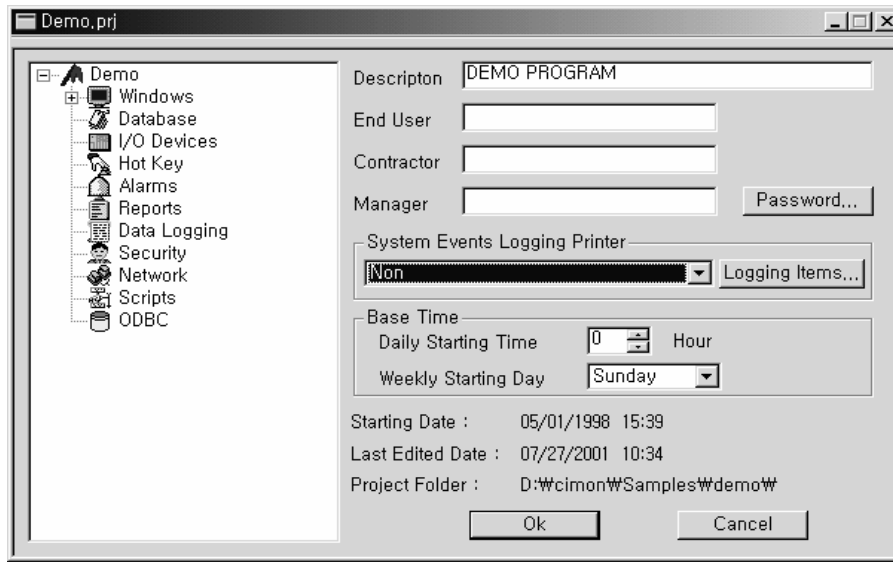
## Chapter 5 Project

The CIMON manages the data files edited with the concept of project. Accordingly, to configure a system, after a project should be set up first, database, HMI monitoring/controlling window and the data files for other necessary functions should be edited. At this time, as all data files are saved in the 'work folder' explained below together, developers can configure a system and perform a transferring work conveniently. Especially, in case of executing several projects, it is easy to manage the data files of each project. A project appears as a window and you can make sure and set up the information such as description, manager, end-user, work folder, starting date, editing date, password and etc. You can read the diverse data files registered to a current project in tree type in this window. If you double-click one among the data files shown on the tree, the corresponding manager will appear on the window. Here, you can edit the necessary contents. The order to create a new project is as follows.



## Configuration of Project Manager Window

If you click the **'Project'** in the **'Tools'** menu or the project icon, a project manager will appear as follows.



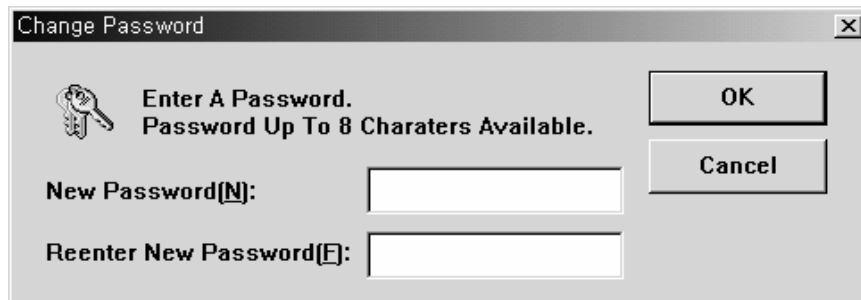
**Description** This is used to enter the description about a corresponding project.

**End-User** This is used to enter the name of an End-User.

**Contractor** This is used to enter the contractor of a project.

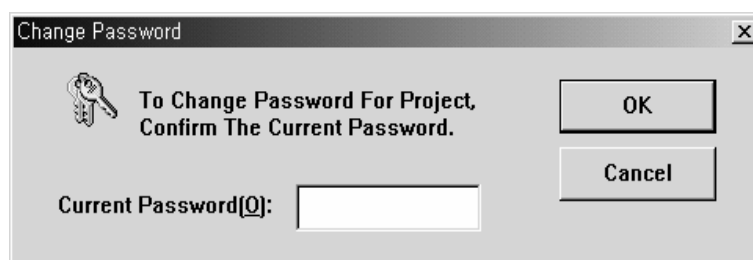
**Manager** This is used to enter the manager of a project.

**Password** This is used to set up the password for a project file. If you select this Password button, the following Change Password dialog box will appear.

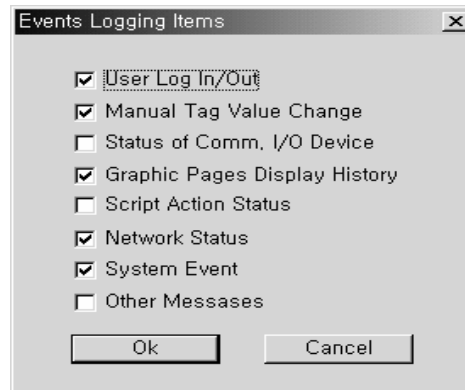


New Password	This is used to set up the new password of a project. The limited conditions are as follows. <ol style="list-style-type: none"> <li>1. It can be set up in the combination of English and numeric.</li> <li>2. Special character or space is not available.</li> <li>3. Maximum 8 characters are available.</li> <li>4. If you enter it, it will be shown as "*****". If you blank this item, no password will be considered.</li> </ol>
Reenter New Password	This is to used to make sure the password once again.
Ok	This is used to save a newly assigned password and to close a Change password dialog box.
Cancel	This is used to cancel an executing work and to close the dialog box.

If a current password is set up, the dialog box to confirm the current password first will appear as follows. If the current password accords, the above Change password dialog box will appear .



- System Event** This is used to assign the printer to output the status of system operation and action in the CimonX.
- Logging Printer** You may not assign (In this case, select 'None') or select the name of the printer registered to a system. (**Note:** only the printer that is available to output in unit of line can be used as a system event-logging printer.)
- Logging Items** This is used to set up items as system event. If you select the Logging Items button, the following dialog box will appear.



User Log	This is used to record the contents of user's log-in/out.
Manual Tag Value Change	This is used to record manually changed contents.
Status of Comm. I/O Device	This is used to record the status of communication .
Graphic Pages Display History	This is used to record the history of displayed graphic pages .
Script Action Status	This is used to record the status of script action .
Network Status	This is used to record the status of network.
System Event	This is used to record the history of system events.
Other Message	This is used to record other messages .

**(Reference)** The contents of system event log are saved as the name of File YYYYMMDD.XLOG in a Log folder under the folder where the CIMON is installed. The system events are saved for a month and you can see the contents of them by using the notepad of Windows or a document editor.

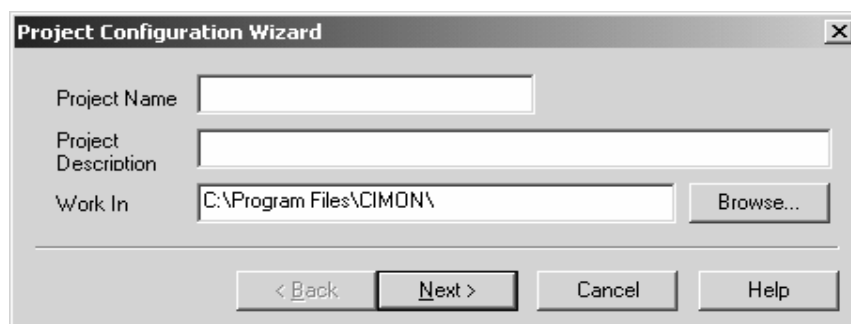
<b>Base Time</b>	This is used to set up the base time used in a report.
Daily Starting Time	This is used to set the base of starting time in a day.
Weekly Starting Day	This is used to select the base of starting day in a week.
<b>Starting Date</b>	This is used to show the date and time when a project is created first.
<b>Last Edited Date</b>	This is used to show the date and time when a project is edited last.
<b>Project Folder</b>	This is used to show the folder in which a project is saved.
<b>Ok</b>	This is used to save the information about a newly assigned project and close the dialog box.
<b>Cancel</b>	This is used to cancel the work in process and close the dialog box .

## Project Menu

### File

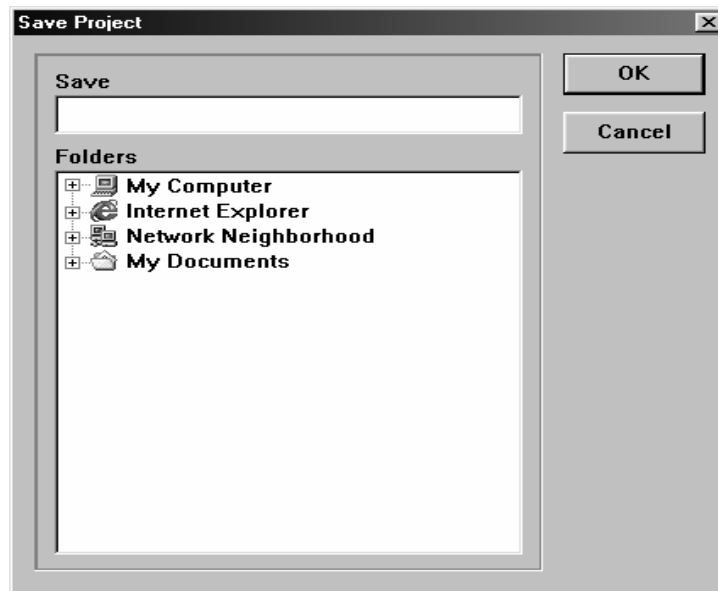


**New Project** This is used to create a new project. The following dialog box will appear.



- Project Name** This is used to enter the name of the project started newly.
- Project Description** This is used to enter detailed description on a project.
- Work In** This is used to assign a folder in which the data file of a new project will be saved. Enter directly in the Work In or use the '**Browse**' to assign a folder with the mouse.

**Browse** This is used to assign the folder where the project data file will be saved by using the following dialog box. If you select this button, the following dialog box will appear.



**Cancel** This is used to cancel the work in process and close a Project Configuration Wizard (First).

**Next** This is used to show the second dialog box to enter other information about a new project. If you press this button, the Project Configuration Wizard (Second) will appear.

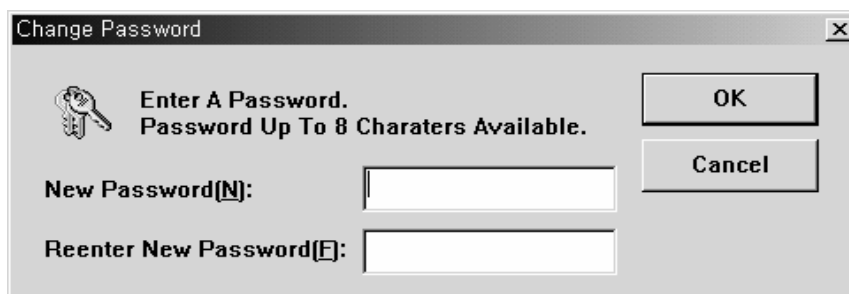


**End-User** This is used to enter the End-User for a project.

**Contractor** This is used to enter the Contractor for a project.

**Manager** This is used to enter the Manager for a project.

**Password** This is used to set up a Password. If you press this button, the following Change Password dialog box will appear.



**New Password** This is used to set up the new password of a project. The limited conditions are as follows.

1. It can be set up in the combination of English and numeric.
2. Special character or space is not available.
3. Maximum 8 characters are available.
4. If you enter it, it will be shown as "\*\*\*\*\*". If you blank this item, no password will be considered.

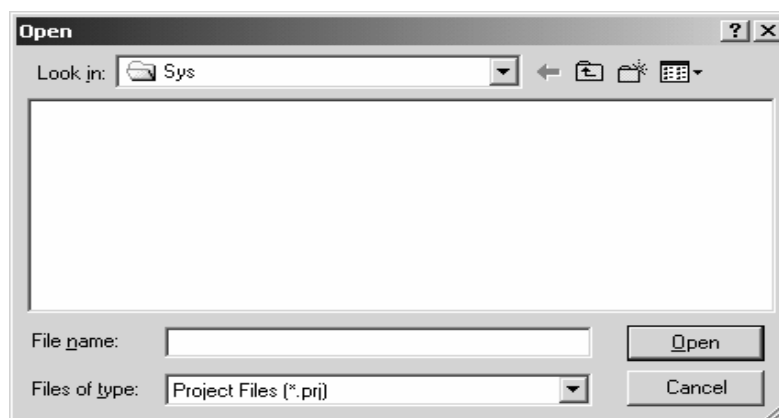
**Reenter New Password** This is to used to make sure the password once again.

**Back** This is used to show the previous project configuration wizard (First).

**Finish** This is used to save all information about a project and close the dialog box. They are saved as Project Name.prj in the work folder where was defined in a project configuration wizard (First).

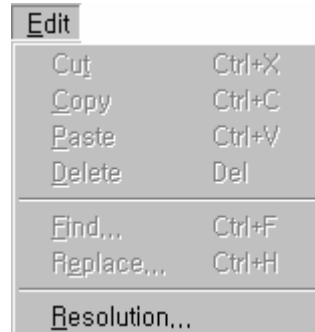
**Cancel** This is used to cancel the work in process and close a project configuration wizard (Second).

**Open Project** This is used to open an existing project. If a new project is selected through this menu, a current project will be saved automatically and be closed.

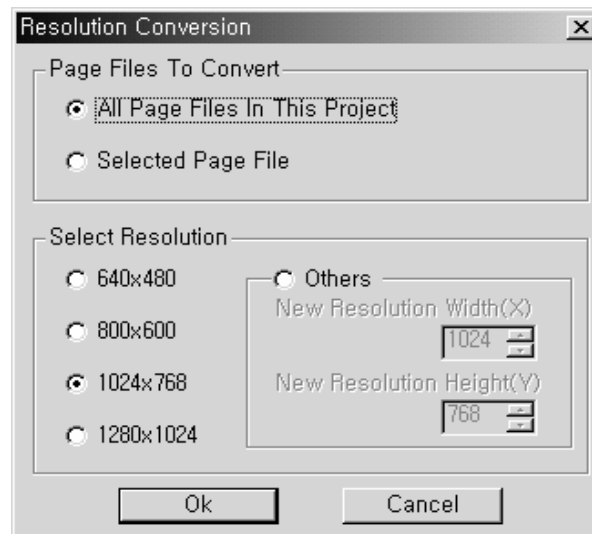


**Close Project** This is used to close a currently edited project.

## Edit



**Resolution** This is used to convert the resolution of a graphic page. For example, this function is used to convert it to fit in a new resolution in case an edited page in the system of the resolution 1024X768 is executed in the system of the resolution 800X600. If you select this menu, a “Convert Resolution” dialog box will appear.

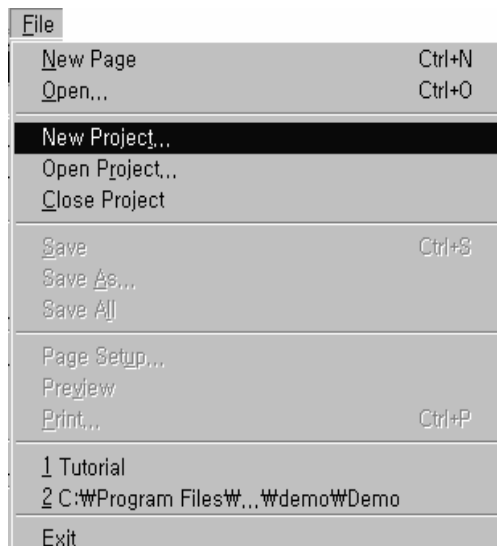


**Page File Converted** This is used to select the page file converted. If you select the “All page files in project”, all the page files under a project folder will be converted. If you select the “Convert selected page file”, only the selected page on the tree window of a project manager will be converted.

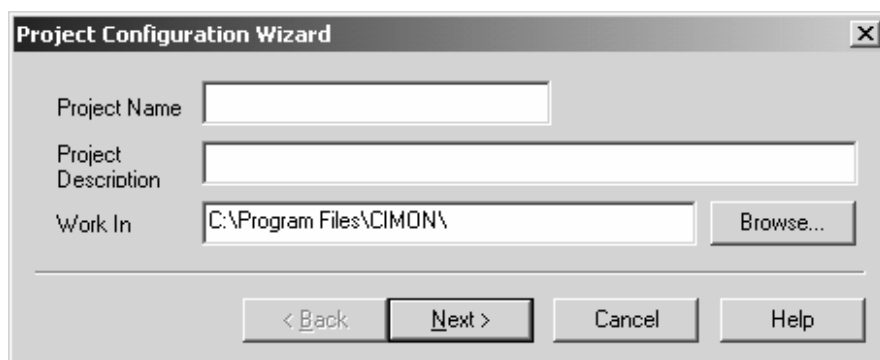
**Resolution Converted** This is used to select a new resolution. You can select general resolution or the others to assign an optional resolution. Default resolutions are as follows. 640x480, 800x600, 1024x768, 1280x1024

## Creating a Project

1. Select the “File” – the “New Project” in the CimonD menu.



2. A “Project Configuration Wizard (First)” dialog box will appear.



3. Enter the project name and description on a project.
4. The Work In is the folder where a project folder will be located. This Work In is assigned to the folder where the CIMON is installed as default. By using the ‘Browse’, it is available to assign other folder.

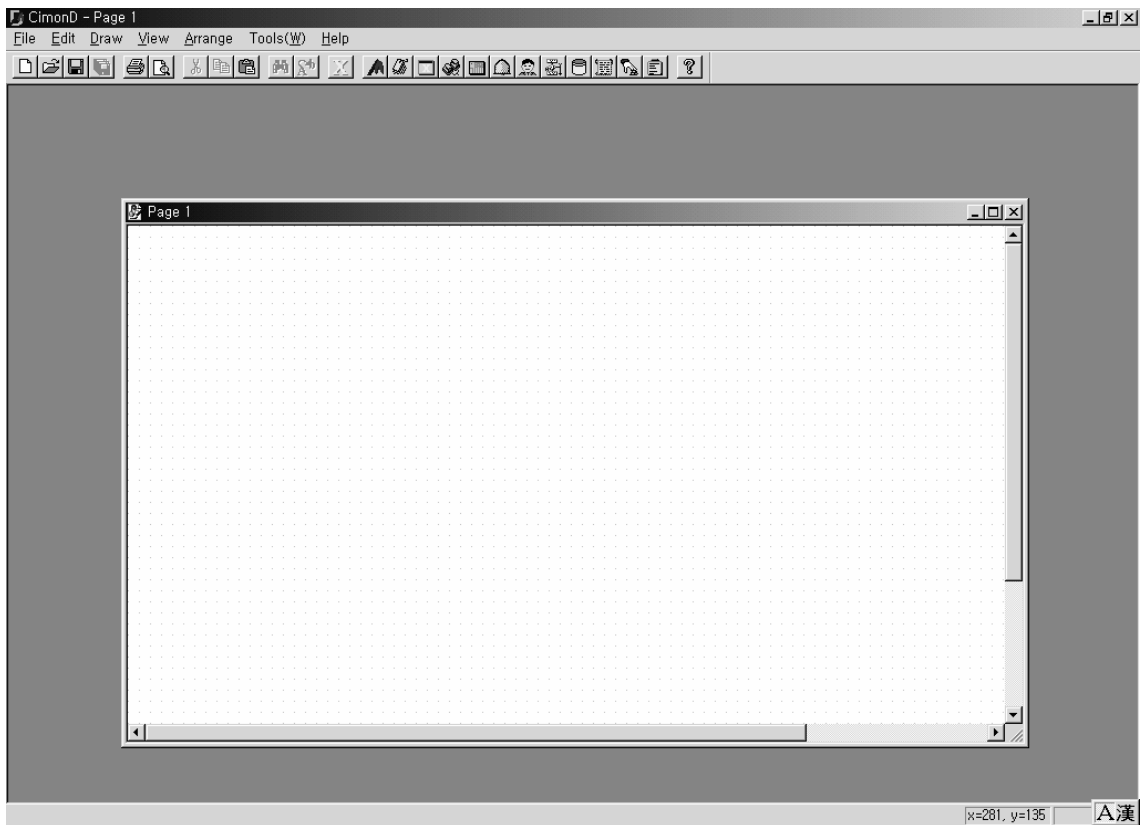
5. Select the “**Next >**” button.

A “Project Configuration Wizard (Second)” dialog box will appear.



6. Select the “**Finish**” button.

A project will be created and the window will appear as follows.



## Setting up Printers

The available printer types in the CIMON are as follows.

1. System event printer
2. Alarm printer (Max. 4 units)
3. Report printer
4. Window printer

**[Note]** 1. System event printer and alarm printer should be the one outputting `in unit of line.  
2. A printer can be used in several purposes.

How to set up the printers for the purposes is as follows.

1. **System event printer:** Use the items in the System Event Logging Printer of a Project Manager.
2. **Alarm printer:** Max. 4 units can be set up separately as an alarm printer. Use the Alarm Configuration. (Refer to chapter 8 Alarm Configuration.)
3. **Report printer:** Reports are outputted with the default printer of a Window system. Accordingly, use the previous way to set up the printer used for reports in the Print of a Window as a default printer.
4. **Window printer:** The printer for Windows is set up as a default printer. Accordingly, windows are printed automatically to the default printer of a system without any setup. Use the following way to output windows to another window printer.
  - ① Select the Print in the File menu of the CimonD or the CimonX.
  - ② Use an appearing Print dialog box to set up the printer used to print windows and click the button to print once. And the setup as the window printer is finished.
  - ③ From the next, the windows will be outputted automatically with the set printer.

**[Reference]** Before setting up printers in the CIMON, all printers should be registered to a system in advance by using the printer setup of Windows.

# MEMO

